

③ The equation $x = \frac{1}{8}y^2$ can be written as $y^2 = 8x$, which is in the form $y^2 = 4px$. The vertex is $V(0, 0)$. Thus, $8 = 4p$ or $p = 2$. The focus is $F(2, 0)$, the equation of the directrix is $x = -2$, and the parabola opens to the right. The graph of $x = \frac{1}{8}y^2$ is shown in *Figure 3*.

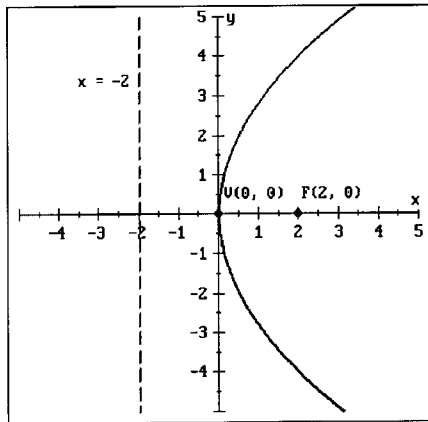


Figure 3