

[21] (a) The energy consumption increased until approximately 1975 when it reached a maximum value. Then the consumption level began to decrease. See *Figure 21a*.

(b) There is a local maximum of approximately 14.5 when $x \approx 23.5$. In 1973 energy use peaked at 14.5 quadrillion Btu. See *Figure 21b*.

[0, 30, 5] by [6, 16, 1]

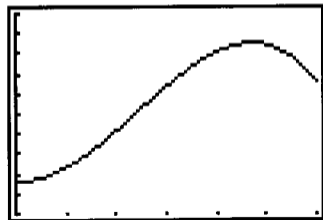


Figure 21a

[0, 30, 5] by [6, 16, 1]

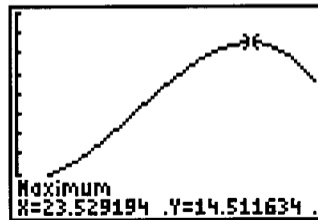


Figure 21b